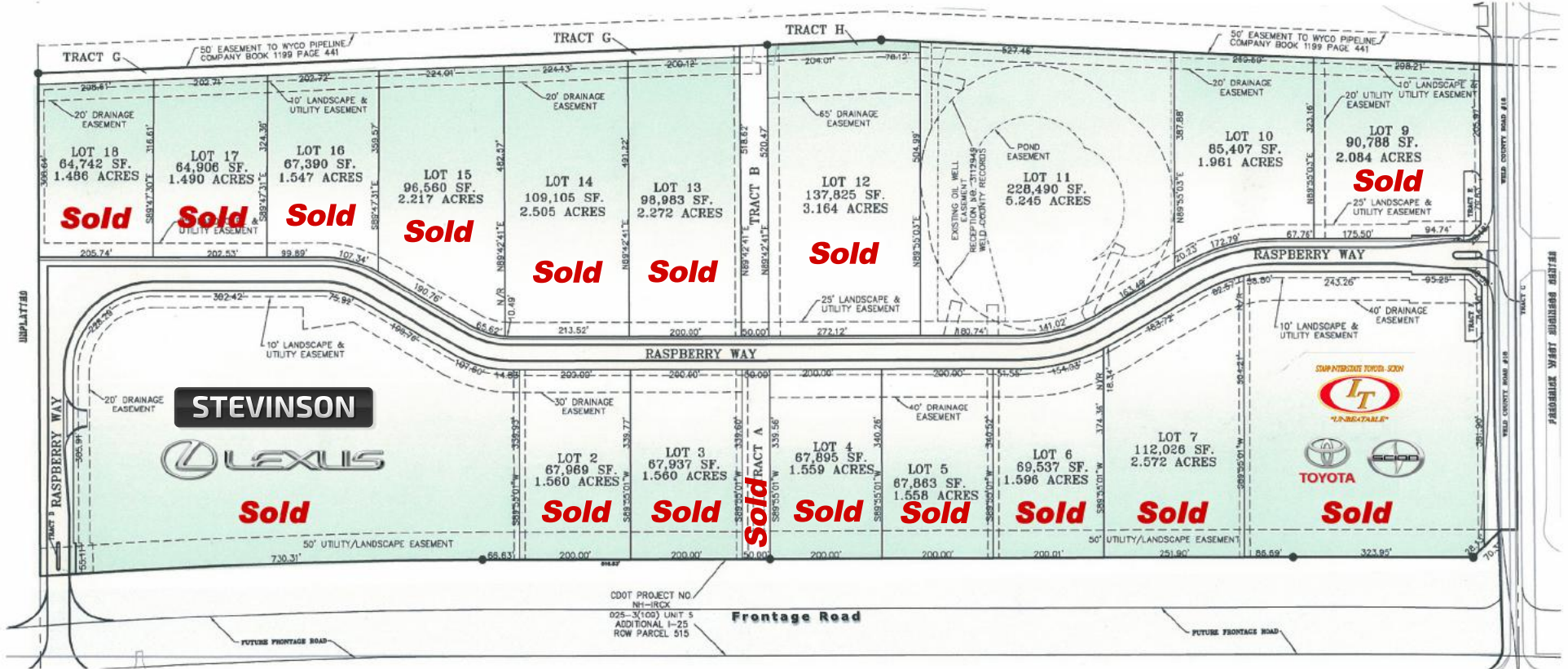




# Raspberry Hill

## Business Park



**GENERAL INFORMATION:** Raspberry Hill is a covenant controlled development that offers easy access to I-25 north or south to fully improved interchanges.

**LOCATION:** Excellent location in the Town of Frederick along the rapidly growing northern I-25 corridor conveniently located midway between Highway 52 and Highway 119 off the east frontage road in an established business area.

**ZONING:** Business Light Industrial (BLI)

**SERVICES:** Police - Town of Frederick  
 Fire - Frederick/Firestone  
 Sewer - St. Vrain Sanitation  
 Water - Town of Frederick (Central Weld)  
 Gas - Kinder Morgan  
 Electric - United Power  
 Phone - Qwest

Interstate 25

