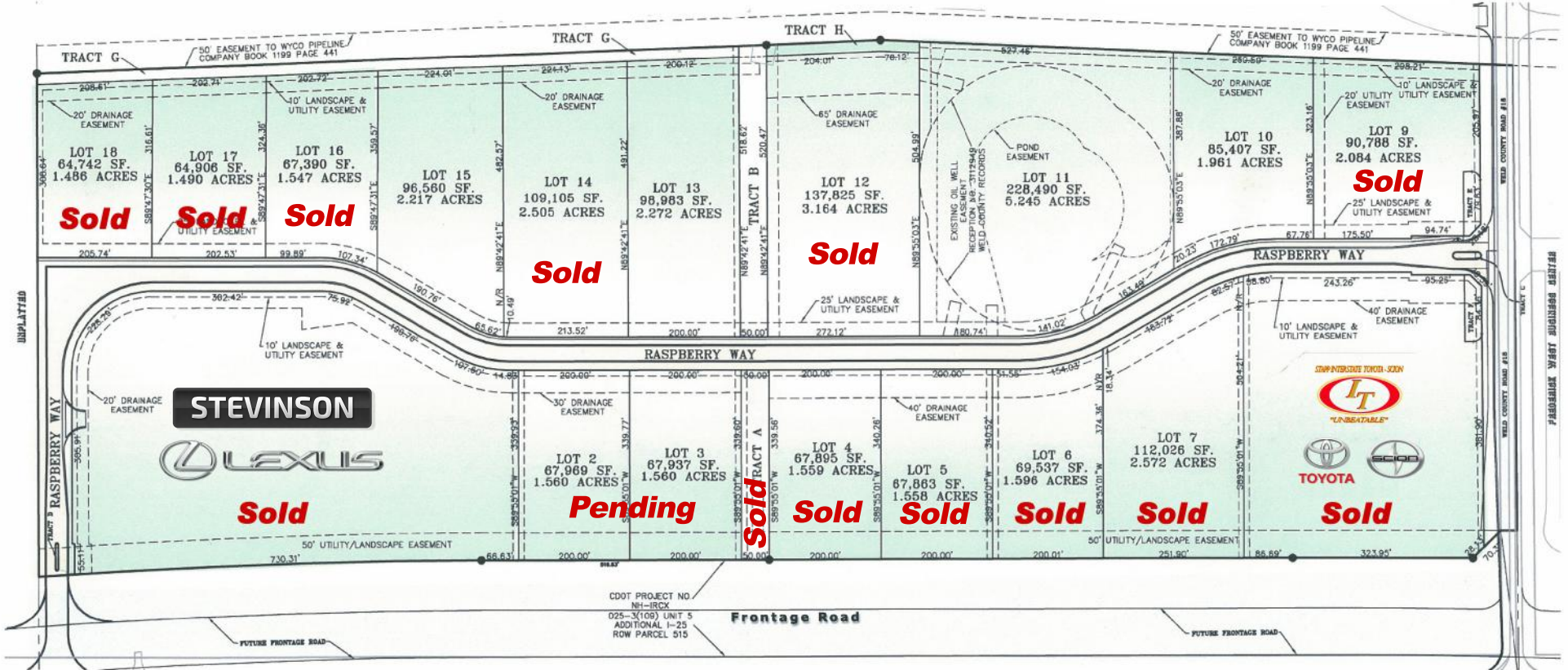




Raspberry Hill

Business Park



GENERAL INFORMATION Raspberry Hill is a covenant controlled development that offers easy access to I-25 north or south to fully improved interchanges.

LOCATION Excellent location in the Town of Frederick along the rapidly growing northern I-25 corridor conveniently located midway between Highway 52 and Highway 119 off the east frontage road in an established business area.

ZONING: Business Light Industrial (BLI)

SERVICES: Police - Town of Frederick
 Fire - Frederick/Firestone
 Sewer - St. Vrain Sanitation
 Water - Town of Frederick (Central Weld)

Gas - Kinder Morgan
 Electric - United Power
 Phone - Qwest

Interstate 25

