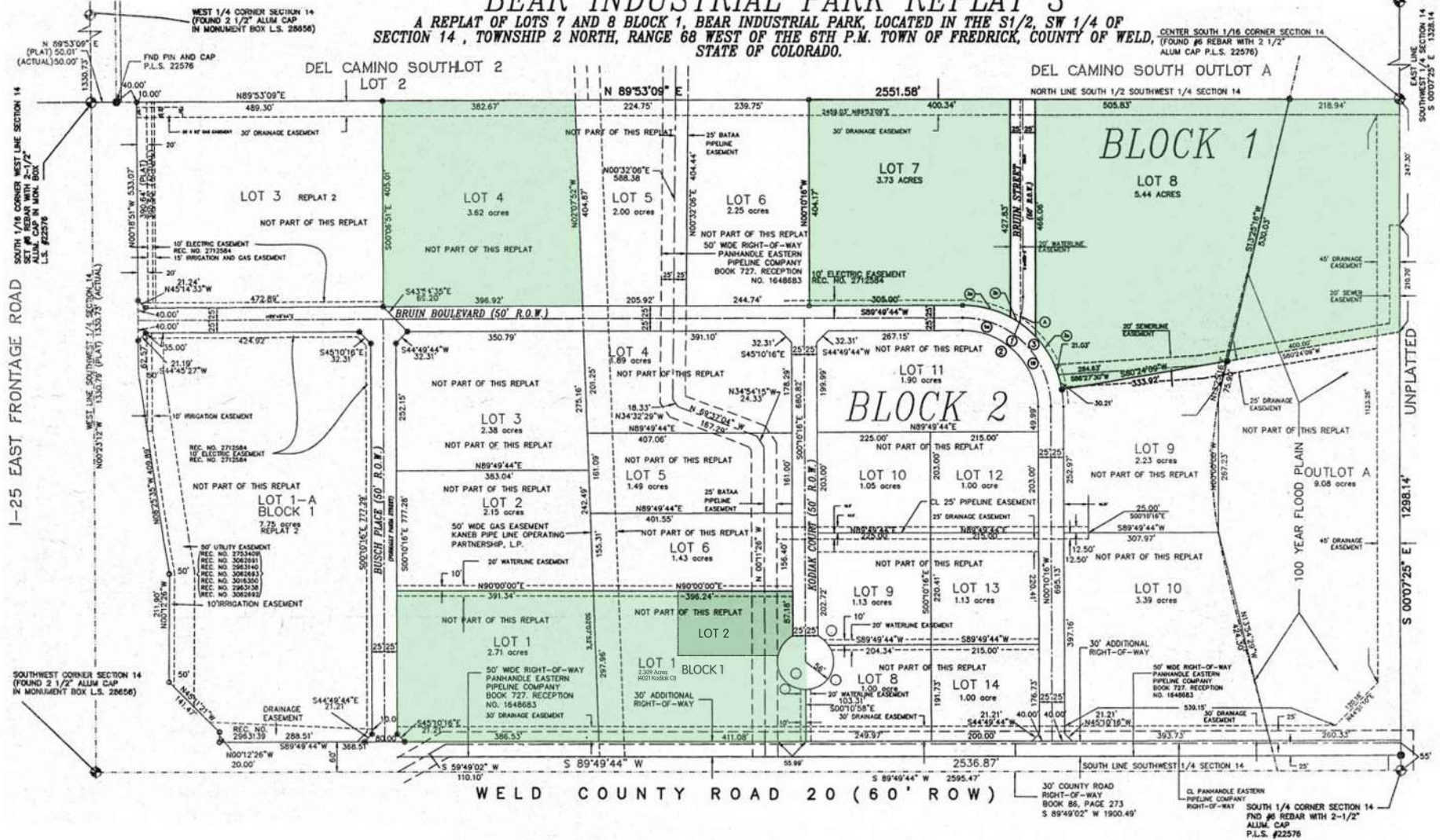




# BEAR Industrial Park

For more information Contact:  
Denver Industrial Realty  
Al Hoppa  
303-758-2712  
[www.RaspberryHill.net](http://www.RaspberryHill.net)

## BEAR INDUSTRIAL PARK REPLAT 3 A REPLAT OF LOTS 7 AND 8 BLOCK 1, BEAR INDUSTRIAL PARK, LOCATED IN THE S 1/2, SW 1/4 OF SECTION 14, TOWNSHIP 2 NORTH, RANGE 68 WEST OF THE 6TH P.M. TOWN OF FREDRICK, COUNTY OF WELD, STATE OF COLORADO.



WELD COUNTY ROAD 20 (60' ROW)

30' COUNTY ROAD RIGHT-OF-WAY PIPELINE COMPANY BOOK 86, PAGE 273 S 89°49'02" W 1900.49'

CL PANHANDLE EASTERN PIPELINE COMPANY RIGHT-OF-WAY SOUTH 1/4 CORNER SECTION 14 FND #6 REBAR WITH 2-1/2" ALLUM. CAP P.L.S. #22576