

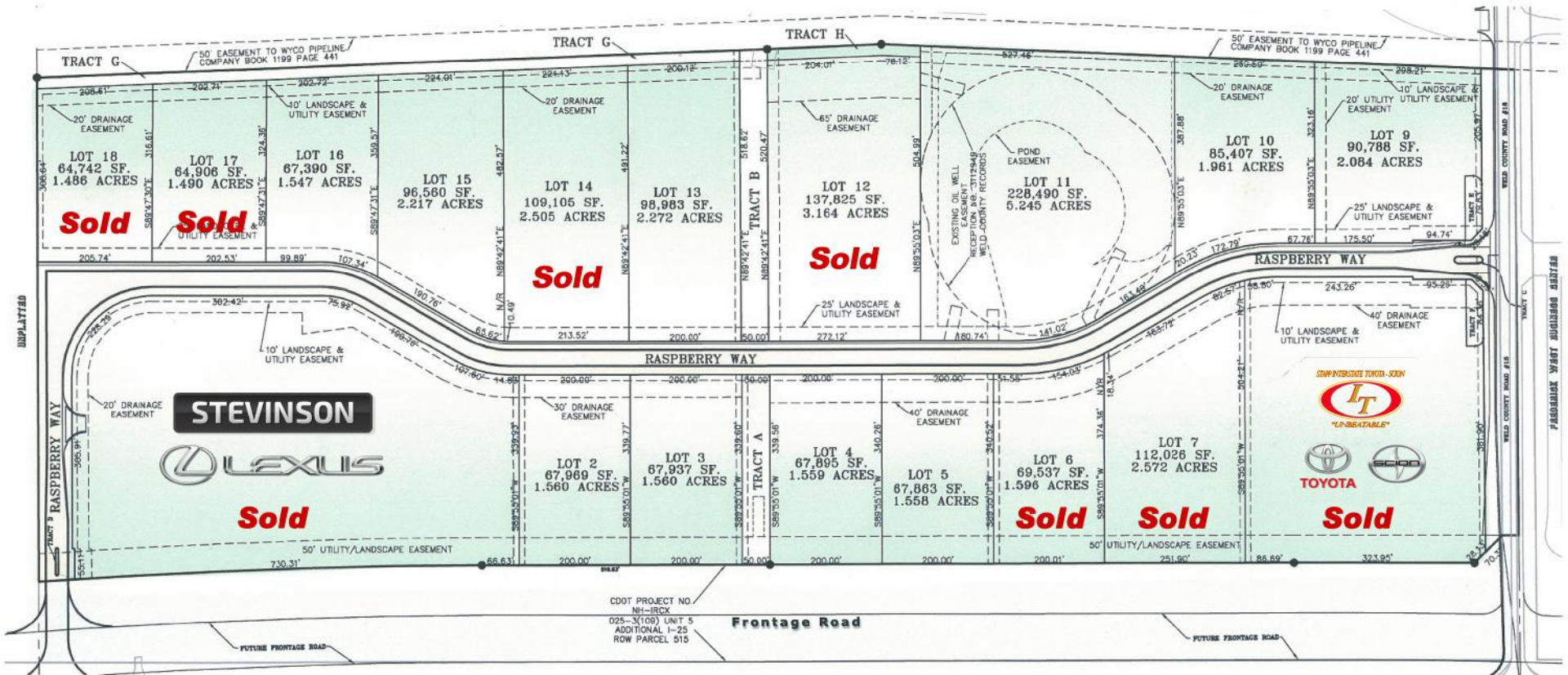


# Raspberry Hill

## Business Park

Ken & Keith Kanemoto  
ReMax Traditions, Commercial Dept.  
2204 18th Avenue,  
Longmont CO 80501

Call: 303-772-2222



**GENERAL INFORMATION**

Raspberry Hill is a covenant controlled development that offers easy access to I-25 north or south to fully improved interchanges.

**LOCATION**

Excellent location in the Town of Frederick along the rapidly growing northern I-25 corridor conveniently located midway between Highway 52 and Highway 119 off the east frontage road in an established business area.

**ZONING:** Business Light Industrial (BLI)

- SERVICES:**
- Police - Town of Frederick
  - Fire - Frederick/Firestone
  - Sewer - St. Vrain Sanitation
  - Water - Town of Frederick (Central Weld)
  - Gas - Kinder Morgan
  - Electric - United Power
  - Phone - Qwest

**Interstate 25**

